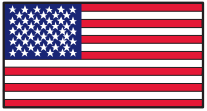


# TD2100

*A Cut Above the Rest*

# ELECTRIC TAPER



Made in the USA



Standard  
Model Shown

# MARSH®

Marsh Shipping Supply Co., LLC.

**Gummed Paper Tape** – without a doubt, the most effective, and most tamper proof method to secure your packages...

**Marsh TD2100 Electric** – without a doubt, the most effective and efficient machine ever designed and manufactured by Marsh Shipping Supply Co., LLC. Used to dispense gummed paper tape, the industry has waited years for this machine. You'll agree that it's been worth the wait! The **TD2100** has been designed with ease of operation and dependability in mind. So, if you are feeling a little insecure about your carton closure – be confident that your packages will be received intact – use the **Marsh TD2100** with gummed paper tape.





All new "Apex" design guillotine style cutter.

420HC Stainless Steel. Provides long life and requires very little cleaning and adjustment.

STANDARD

SHIFT	45	90
36	78	28
24	56	20
16	42	12
10	32	8
6	5	0

PREMIUM SHORT

NUM LOCK	45	90
36	78	28
24	56	20
16	42	12
10	32	8
6	5	0

PREMIUM LONG

NUM LOCK	90	45
78	66	28
56	48	20
42	36	12
32	24	8
14	6	0

The all new TD2100 Electric is available in 3 models to meet your specific carton closure needs. Standard, Premium Short and Premium Long.

All models feature a tactile keypad, programmable repeat keys for short and long tape lengths. Ideal for sealing same size cartons! Random/Continuous feed feature built-in. LCD Display of lengths.



Bigger is Better! 70 oz water bottle increases production "Up Time" with fewer refills.

Rubber valve reduces water spillage.

Largest bottle in the industry!

**SPECIFICATIONS:**

**Tape**

Paper or Reinforced Gummed tape

Up to 1,000' (304.8m) long roll standard

Maximum roll diameter 9" (222.6mm)

**Tape Widths Accepted**

1" (25 mm) to 3" (80 mm)

**Water Bottle**

70 ounces (2.07 L)

**Shipping Weight**

33 lbs (14.97 kgs)

**Dimensions**

18.9" L x 10.5" W x 13.7" H  
(48.0cm L x 26.6cm W x 34.8cm H)

**Electrical Requirements**

115 volts AC 50/60 Hz, 4 amps  
220 volts AC 50/60 Hz, 2 amps  
Power cord 7 feet (2.3m)

**Certifications**

Conforms to ANSI/UL Std.60950-1, 1st Ed., certified to CAN/CSA C22.2 no.60950-1-03, 1st Ed., CE certified to standard IEC/EN 60950-1: 2001, 1st Ed



**Warranty**

18 Months, Limited

All new wide track 1.5" (38.1mm) feed roll and pinch roll using a high coefficient of friction urethane insuring your tape is always on the move.



All new steel-plated tape plate extension eliminates the possibility of incorrect tape loading.

**FEATURES:**

Heavy duty all metal uni-body chassis construction. powder-coat painted with industrial finish. Long-lasting, high strength injection molded enclosures.

Built-in, all metal adjustable tape guides. Maintains tape roll for smooth tape flow and accurate cutting/less jamming.

High RPM brushless motor with brake and neoprene drive belt. Very quick. Very quiet.

High resolution encoder fastened directly to the motor. Eliminate tape waste with accurate tape lengths.

Lightning fast at the press of a key. Dispenses tape at 3 feet (91 cm) per second.

Dual, double-digit LCD displays the saved long and short tape lengths.

Safety shroud protects user from the heavy duty "apex" design guillotine-style stainless steel cutter.

Premium model not only offers 10 pre-set selectable lengths, but with the use of the "num lock" key provides option to input custom lengths ranging from 5" - 99".



Gummed paper tape is not only environmentally friendly, it's also durable, easy to work with and quick-sealing.

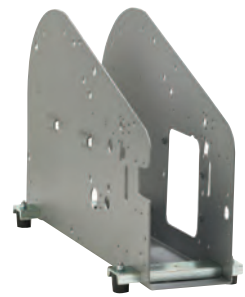
Unlike some tapes that adhere just to the surface of the material they're applied to, the gummed tape is activated by water. When it's applied to a corrugated box, it forms a solid and secure bond.

**MARSH**<sup>®</sup>

Marsh Shipping Supply Co., LLC.



Optional foot pedal and tape coder available



Heavy Duty - All Metal uni-body chassis provides stability and durability in any environment.